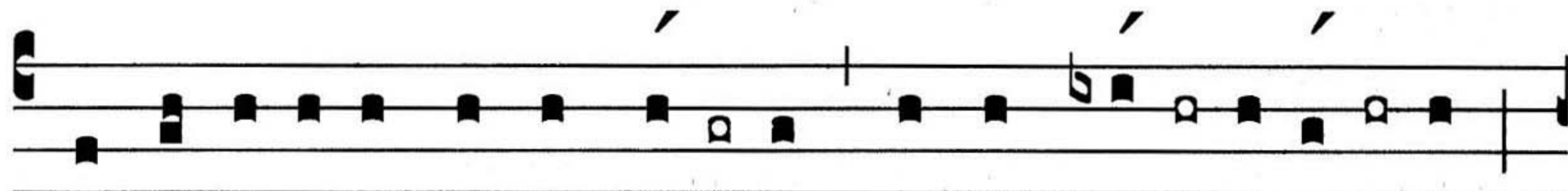
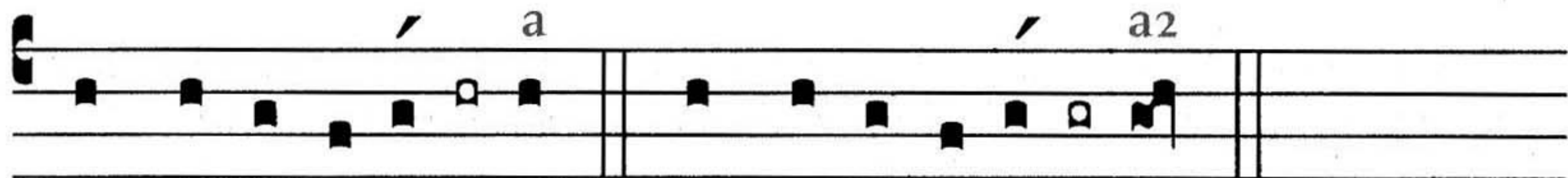


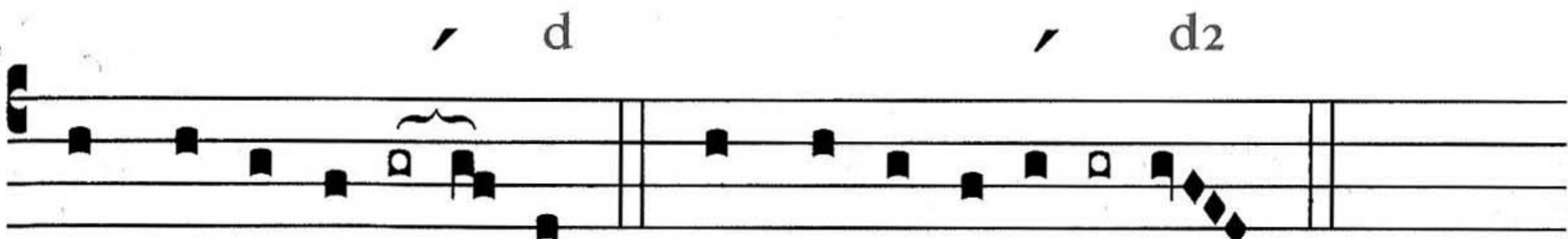
TONUS I



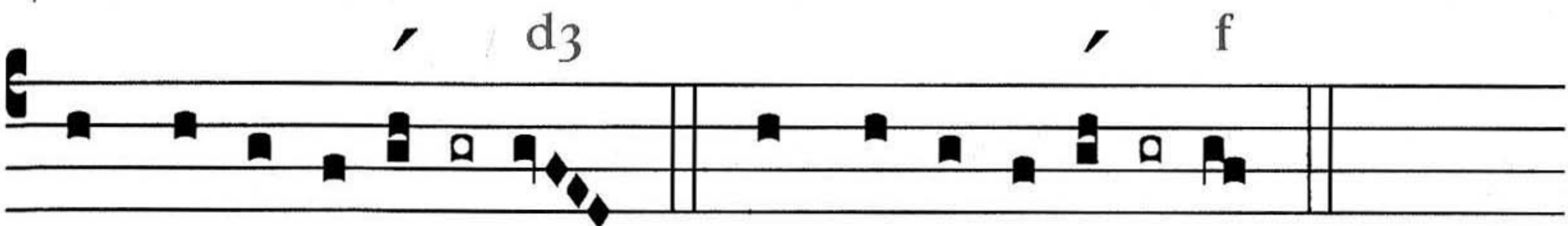
Sic incí-pi-tur, et sic flécti-tur, † et sic me- di- á- tur; *



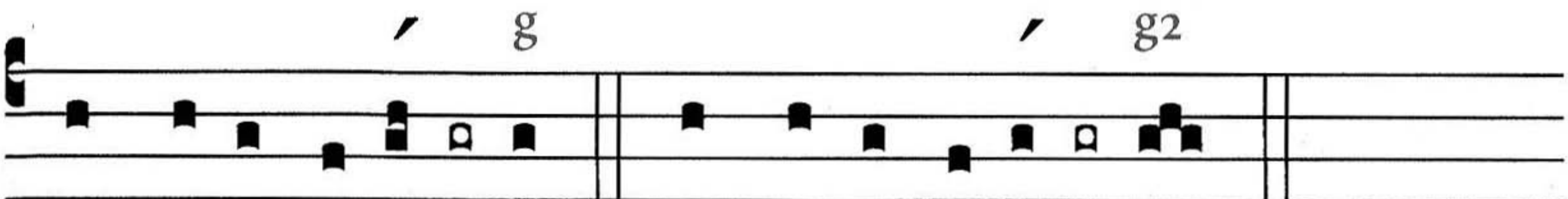
Atque sic fi-ní- tur. Atque sic fi-ní- tur.



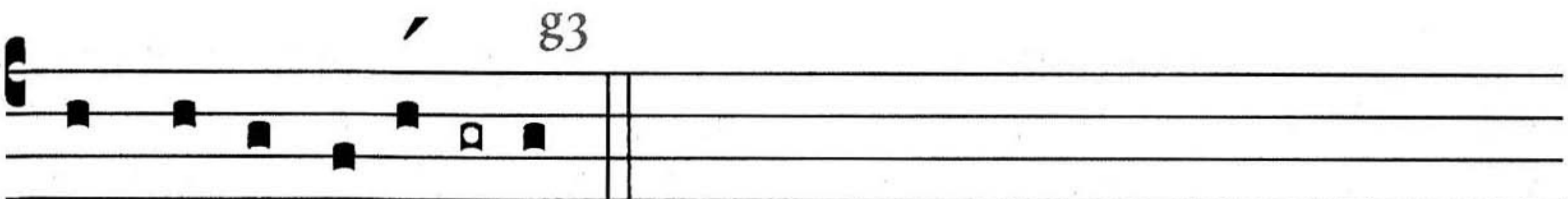
Atque sic fi- ní- tur. Atque sic fi-ní- tur.



Atque sic fi-ní- tur. Atque sic fi-ní- tur.



Atque sic fi-ní- tur. Atque sic fi-ní- tur.



Atque sic fi-ní- tur.