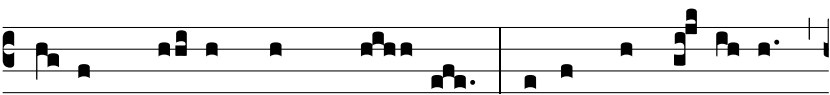


Intr.  
7.

P



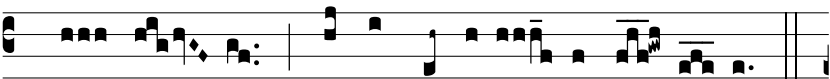
U-ER \* na- tus est no- bis, et fí-



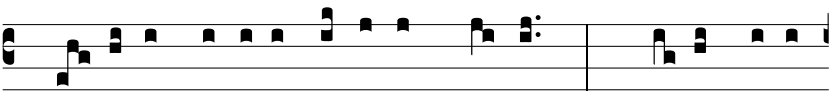
li- us da- tus est no- bis: cu- jus impé- ri- um



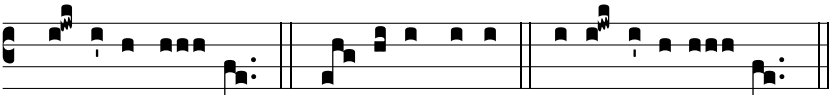
super hú- me- rum e- jus: et vo- cá- bi- tur no-



men e- jus, magni consí- li- i An- ge- lus. *Ps.*



Can- tá- te Dómino cánti- cum no- vum: \* qui- a mi- ra-



bí- li- a fe- cit. Gló- ri- a Pa- tri. Eu o u a e.