

CRUX FIDELIS

I
C Rux fi-dé-lis, inter omnes Arbor una nó-bi- lis:

Nulla silva ta-lem pro-fert, Fronde, flo- re, gérmi- ne:

* Dulce lignum, dulces clavos, Dulce pondus sústi-net.

1. Pange, lingua, glo-ri- ó- si Láure- am certámi- nis, Et

su- per cru- cis trophæ- o Dic tri- úm- phum nó- bi- lem:

Quá- li- ter Re- dém- ptor orbis Immo- lá- tus ví- ce- rit.

Cruc...gérmine.

2. De pa- réntis pro- toplá- sti Fraude Factor cóndo- lens,

Quando pomi no- xi- á- lis In necem morsu ru- it:

Ipse lignum tunc no- tá- vit, Damna ligni ut sólve- ret.

** Dulce.*



3. Hoc o-pus nostræ sa-lú- tis Ordo de-po-pósce- rat:



Multi- fórmis prodi- tó-ris Ars ut ar-tem fálle- ret: Et



me- dé-lam ferret inde, Hostis unde læ-se- rat.

Crux...gérmine.



4. Quando ve-nit ergo sa-cri Ple-ni-tú-do témpo- ris,



Missus est ab arce Patris Na-tus, orbis Cón-di- tor, At-



que ventre virgi- ná-li Carne amí-ctus pró-di- it.

** Dulce.*



5. Va-git infans inter arcta Cón-di-tus præ-sé-pi- a:



Membra pannis invo- lú-ta Virgo Ma- ter ál-li-gat:



Et De- i ma-nus pe-désque Stricta cingit fásci- a.

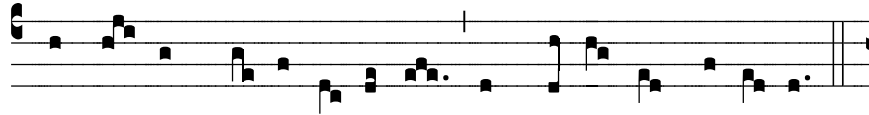
Crux...gérmine.



6. Lustra sex qui jam pe-ré- git, Tempus implens córpo-



ris, Sponte lí-be- ra Re-démptor Passi- ó- ni dé-di- tus,

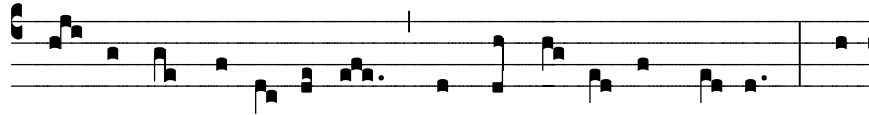


Agnus in Cru- cis le- vá- tur Immo- lándus stí- pi- te.

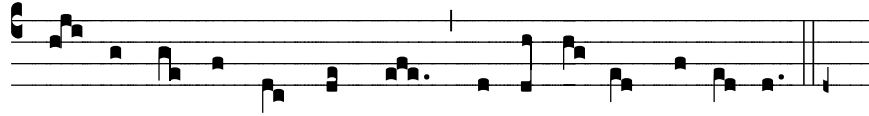
** Dulce.*



7. Felle po- tus ecce languet: Spi- na, cla- vi, lánce- a, Mi-

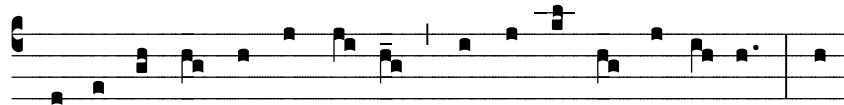


te corpus perfo- rá- runt, Unda ma- nat et cru- or: Ter-

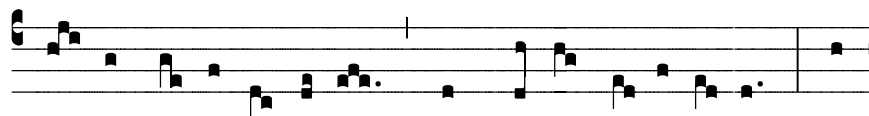


ra, pontus, astra, mundus, Quo la- vántur flúmi- ne!

Crux...gérmine.



8. Flecte ramos, arbor al- ta, Tensa la- xa vísce- ra, Et

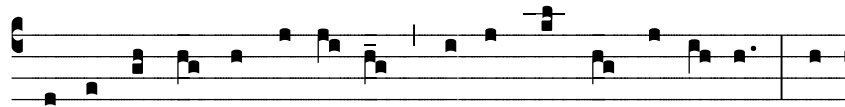


ri- gor lentéscat ille, Quem de- dit na- tí- vi- tas: Et



su- péni membra Re- gis Tende mi- ti stí- pi- te.

** Dulce.*



9. So-la digna tu fu- í- sti Ferre mundi Vícti- mam: At-



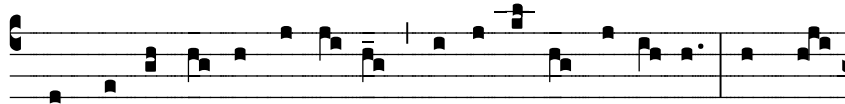
que pro- tum præpa- rá- re Arca mundo náufra- go: Quam



sa- cer cru- or per- únxit, Fusus Agni córpo- re.

Cruc...gérmine.

[The following conclusion is never to be omitted:]



10. Semp- térna sit be- á- tæ Tri- ni- tá- ti gló- ri- a: Æqua



Patri Fi- li- óque; Par de- cus Pa- rácli- to: Uní- us



Tri- níque nomen Laudet u- ni- vérsi- tas. A- men.



* Dulce lignum, dulces clavos, Dulce pondus sústi- net.

Source: Parish Book of Chant
CMAA 2012
<http://musicasacra.com/pbc/>